



Tera Term

Installation of Terminal Program Tera Term

The Tera Term software is required for advanced change in set-up of alarm levels, output, etc. in the Geopal System detectors.

Please follow the below instruction to install the terminal program Tera Term.

geopal[®]

Bygmarken 19 • DK-3520 Farum
+45 4567 0600 • info@geopal.dk • www.geopal.dk



PENDING

ITS-I 23ATEX036745

DBI req. no 233.301

DIC444QMS

1. Download Tera Term

- Visit Tera Term Homepage: [Releases · TeraTermProject/teraterm \(github.com\)](https://github.com/TeraTermProject/teraterm/releases)
- Navigate to the assets section assets and press Teraterm-5.2.exe, see the figure below:

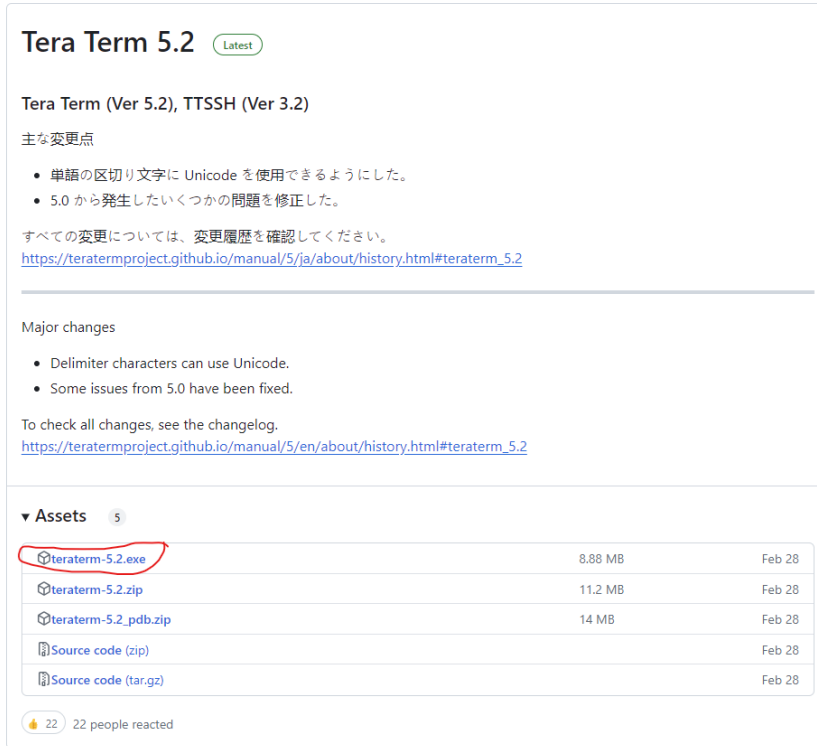


Figure 1 Screenshot of Tera Term home page, download section is highlighted with red.

Or click the following address to navigate to the download section directly:

<https://osdn.net/projects/ttssh2/releases/>

2. Install Tera Term

- Launch installation setup. As administrator by left clicking, and selecting run as administrator.
- Accept the software agreement.
- Click Next.
- Choose the desired user language and proceed the typical installation steps by clicking Next and finally click Install.

3. Install USB Driver

- a. Sometimes the USB driver does not support the serial communication. Therefore in some cases you need to install. CDM212364_Setup.exe. [D2XX Drivers - FTDI \(ftdichip.com\)](http://www.ftdichip.com)
- b. Press Extract.
- c. Accept the software agreement.
- d. Finish installation.

4. Connect Geopal System unit to the PC

- a. Geopal Communication Cable USB to RJ-45
or
- b. Geopal Communication Cable RJ-45 to 10 pol
p



Figure 2 Set of communication cable (Geopal System part no. TEST-1038).

5. Launch Tera Term

You will be prompted to establish a new connection, the first time you launch Tera Term. If you have the communication cable plugged in the PC, you will be able to choose Serial communication. See the figure below.

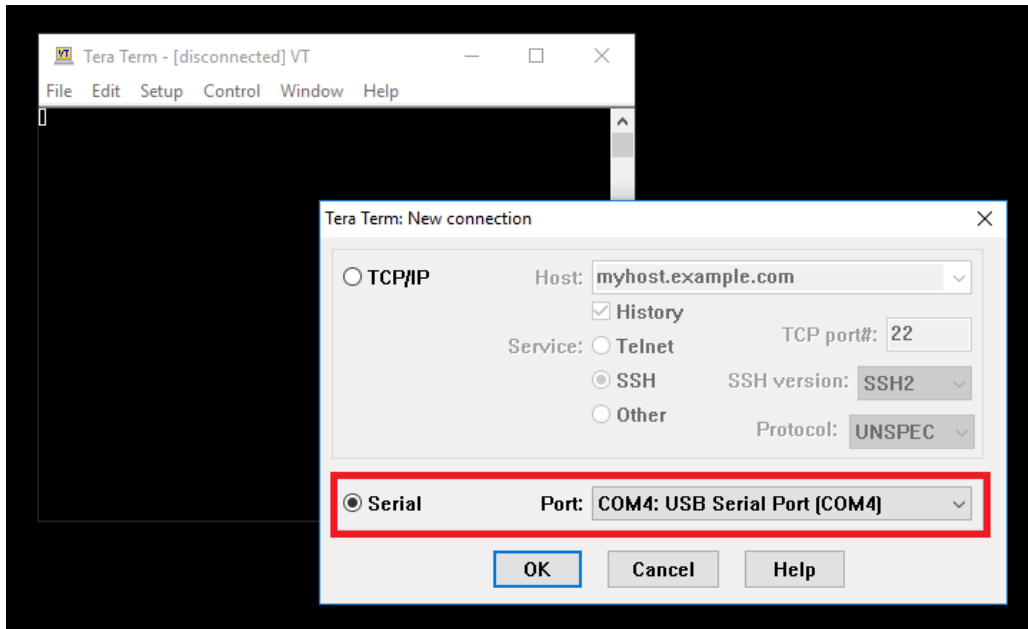


Figure 3 Choosing the Serial communication in Tera Term. The port number is found automatically by Tera Term.

As seen in the figure above, Tera Term has found the communication port automatically. It is recommended to check if the port number is correct. This can be done in the Device Manager, under Ports (COM & LPT).

6. Setting up Tera Term

- a. Click on Setup in the main menu
- b. Navigate and click on Serial Port. See the figure below.

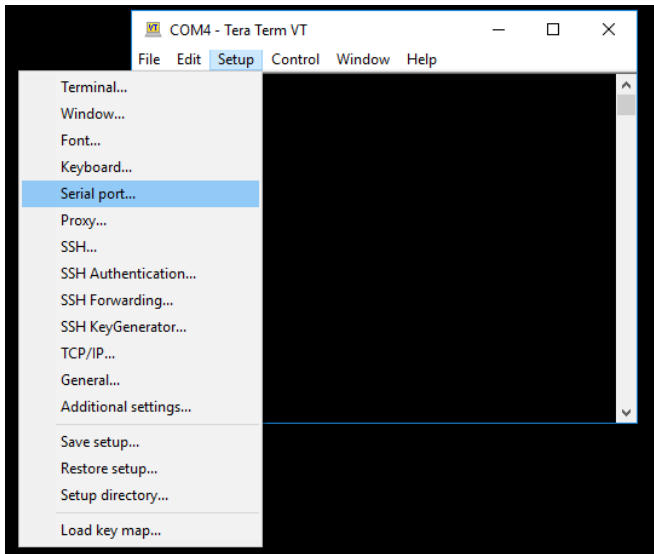


Figure 4 Finding the Serial port communication option.

- c. Make sure that the Port number is correct and choose a Baud rate of 2400. The rest is default. Click OK to close the Serial port setup window. See figure below.

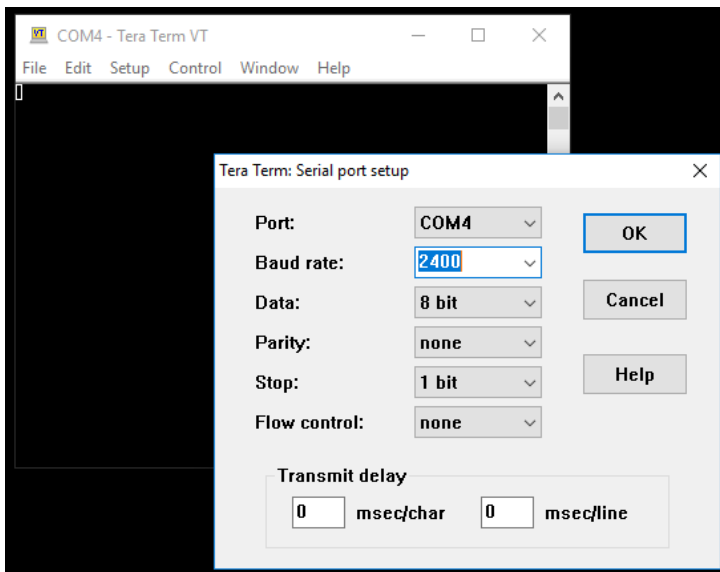


Figure 5 Port and Baud rate settings in Tera Term.

7. Communicating with the PC

- a. Click on Tera Terms black window, to bring the software in focus.
- b. Press ENTER on the keyboard.
- c. Software ID number and the Main Menu will appear¹. See the figure below:

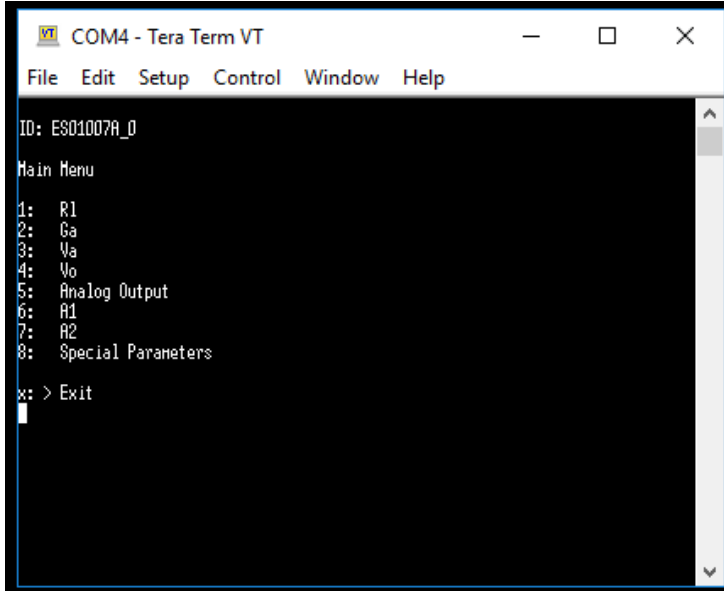


Figure 6 Software ID and Main Menu appears after pressing ENTER.

- d. Press "X" on the keyboard to view real time readings of detector signal. See the next figure.

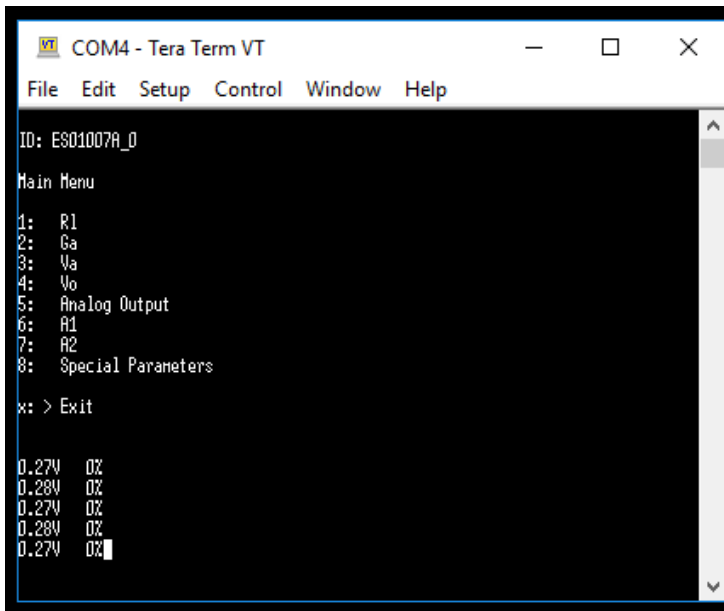


Figure 7 Real time readings from the detector.

You should now be able to communicate and setup Geopal System controllers via Tera Term.

¹ Menu layout and options may vary, depending on the controller unit. The above figures are taken from GP-unit.